



Daisy Properties

Sales & Lettings made easy



5 Discovery House

Torpoint, PL11 2LG

Offers in excess of £135,000

THIS GORGEOUS FLAT IS NOW UNDER OFFER.



Entrance Hall

Entry is via a wooden fire door. Video entry phone. Consumer unit. Smoke detector & fire alarm. Loft hatch. Skirting boards.

Bathroom

Entrance is via a wooden fire door painted white with white metal handles. White three-piece suite comprising: Low level WC, a vanity wash hand basin with mixer taps and a non-touch light up mirror over, a panelled bath with hot & cold taps. Over the bath is a rainwater shower and an electric Mira shower, shower screen. Heated towel rail. Extractor fan. Light grey, wood-effect laminate flooring.

Double Bedroom 13'7 x 12'2 to widest point (4.14m x 3.71m to widest point)

Entrance is via a wooden fire door, painted white with white metal handles. uPVC double glazed window to the side aspect, vertical blind. Radiator. Skirting boards.

Lounge Area 14'4" into alcove x 14'11" into bay (4.39m into alcove x 4.57m into bay)

Entrance is via wooden panel fire door, painted white with white metal handles. uPVC double glazed bay windows with river glimpses, and vertical blinds. Wall mounted flat screen TV, and electric wall mounted fire with mood lighting. Radiator. Skirting boards.

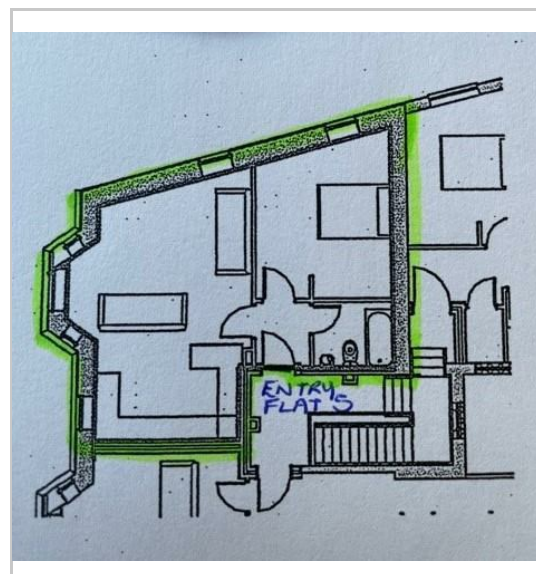
Kitchen Area 7'9 x 12' (2.36m x 3.66m)

A range of grey high-gloss wall, base and drawer units with stainless steel handles and offset by white high-gloss work tops. Stainless steel bowl & a half sink with swan neck mixer tap over. Integrated fridge freezer, dishwasher and washing machine, Lamona oven & grill, with an integrated induction hob, and stainless steel extractor hood over. Grey tiles around work area, with mosaic tiled splashback. Grey wood-effect laminate floor. Inset spotlights and LED mood lighting. uPVC double glazed window with river glimpses, vertical blinds.

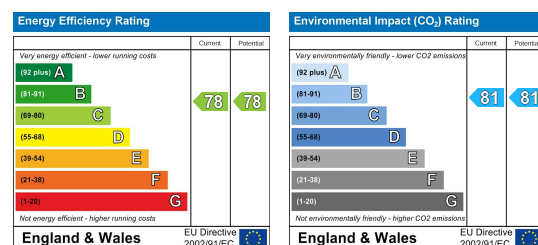
Area Map



Floor Plans



Energy Efficiency Graph



These particulars, whilst believed to be accurate are set out as a general outline only for guidance and do not constitute any part of an offer or contract. Intending purchasers should not rely on them as statements of representation of fact, but must satisfy themselves by inspection or otherwise as to their accuracy. No person in this firm's employment has the authority to make or give any representation or warranty in respect of the property.